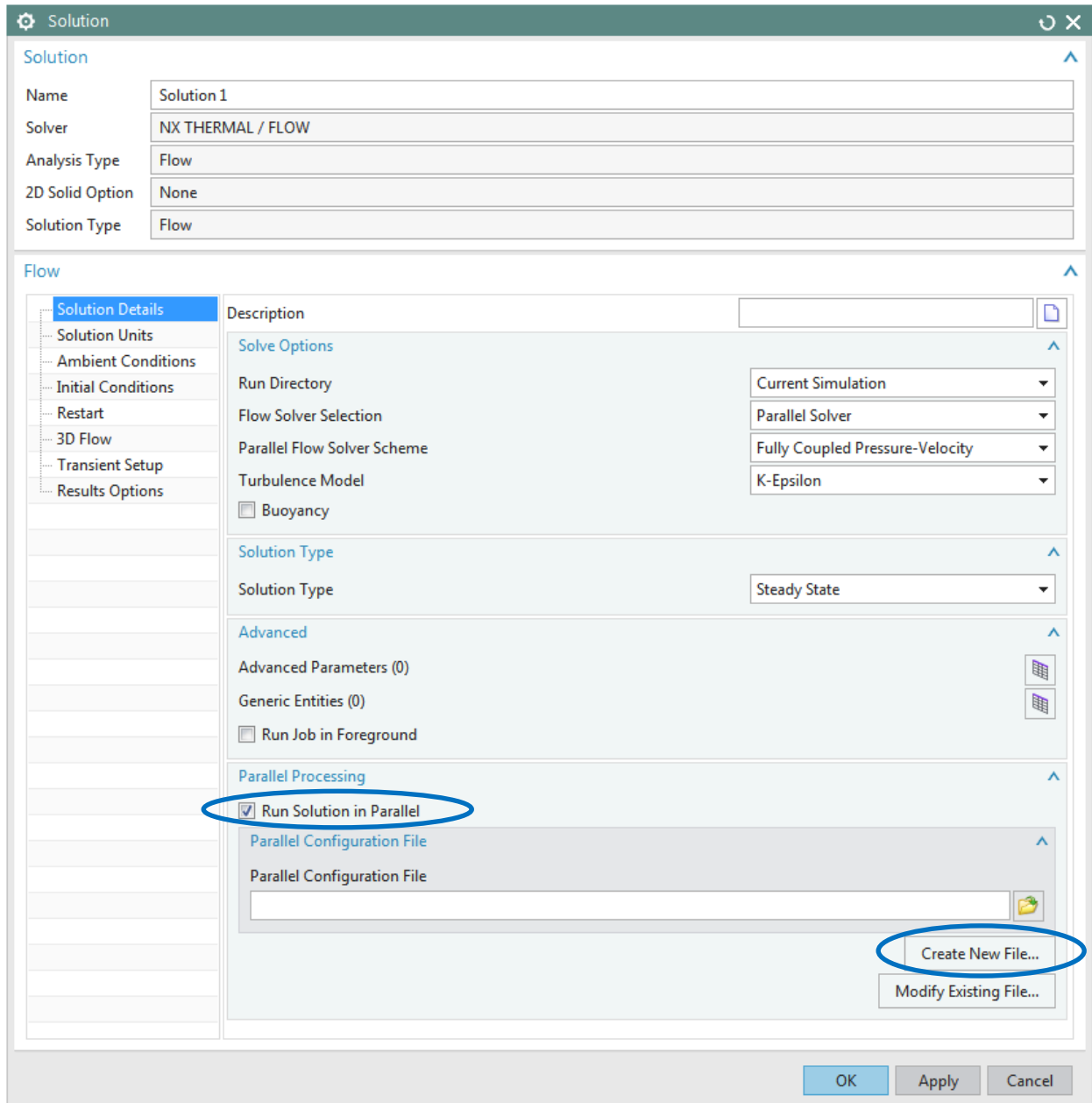


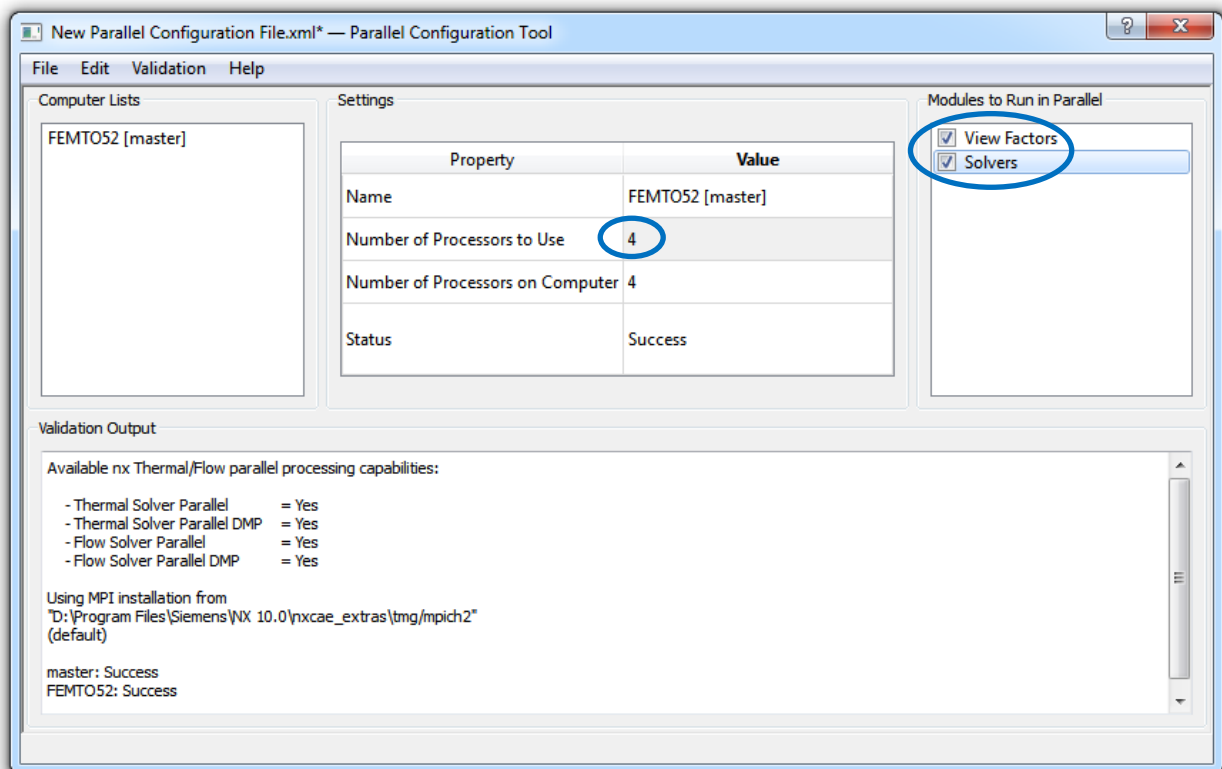
Using multiple cores in NX Thermal / Flow simulations

To use multiple cores in NX Thermal / Flow simulations an add-on needs to be installed. This add-on is available in the installation directory of NX in: NXCAE_Extras/tmg/mpich2

After the installation of the software open the simulation file. Edit the simulation and select “Run Solution in Parallel” in the “Solution Details” (see picture). Click on “Create New File”.



Select the amount of cores to use and the modules to run in parallel (see picture).



Click on “File – Save as...” and save the settings. Close the dialogue box. Now it is possible to use up to 8 cores on a single machine.

The NX Thermal/Flow DMP add-on product is required to remove any software limitations on the number of processes per run for parallel processing and enables parallel solutions over networks and clusters.