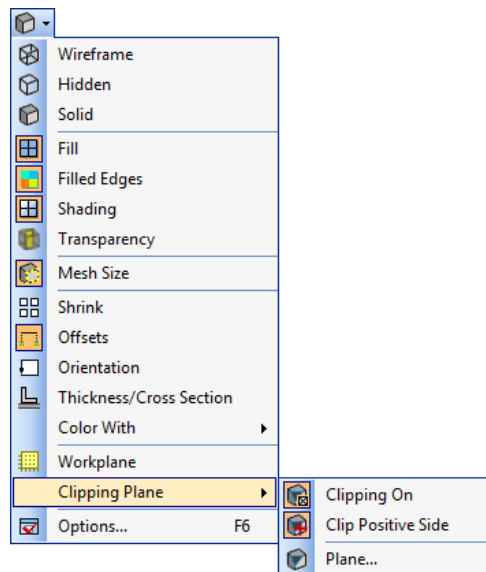


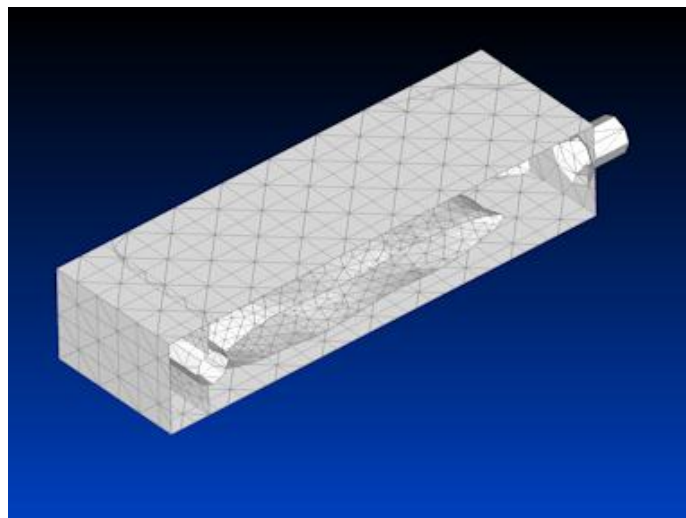
Femap Tip and Tricks: Clipping Plane

The model clipping plane is an invaluable visualization tool that allows you to slice through the FEA or geometry model and view the interior with part of the model removed.

To switch the Clipping Plane on, open the dropdown menu from the View Style icon on the View toolbar, then open the Clipping Plane dropdown, and select the Clipping On icon. On this dropdown you'll also see controls for plane positioning and viewing side toggling.



With the model clipping switched on, it can be dynamically controlled using the Alt key and the middle mouse button enabling you to interactively slide the plane through the model. The Model Clipping Plane uses OpenGL, so for solid models you'll only see the model surface outline. You can also easily switch sides for visibility or define the plane orientation.



Watch the video of this Femap tip on [YouTube](#).