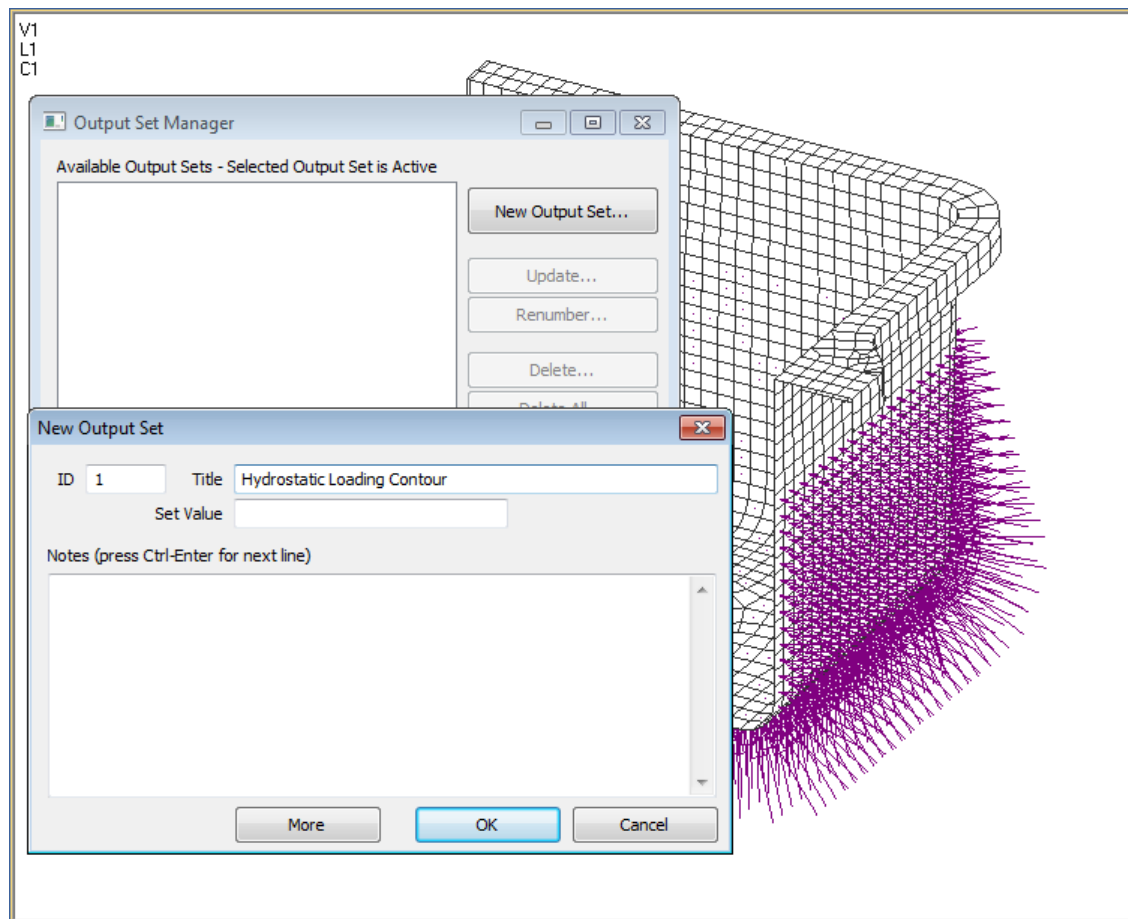


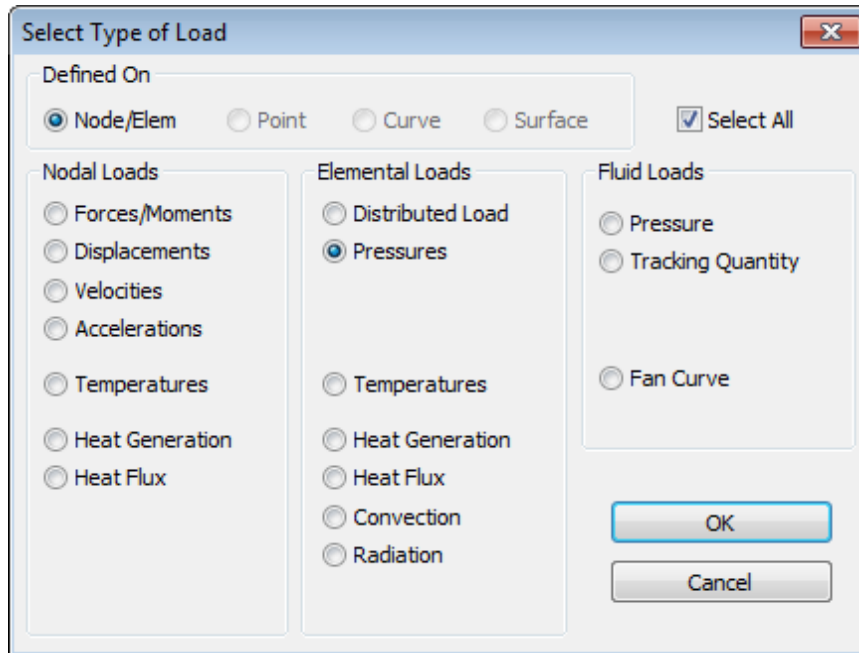
Femap Tip and Tricks: Loading Contour

One method of quickly verifying correct loading definition particularly for two dimensional spatial loads such as pressures or temperatures, is to view the load as a contour plot.

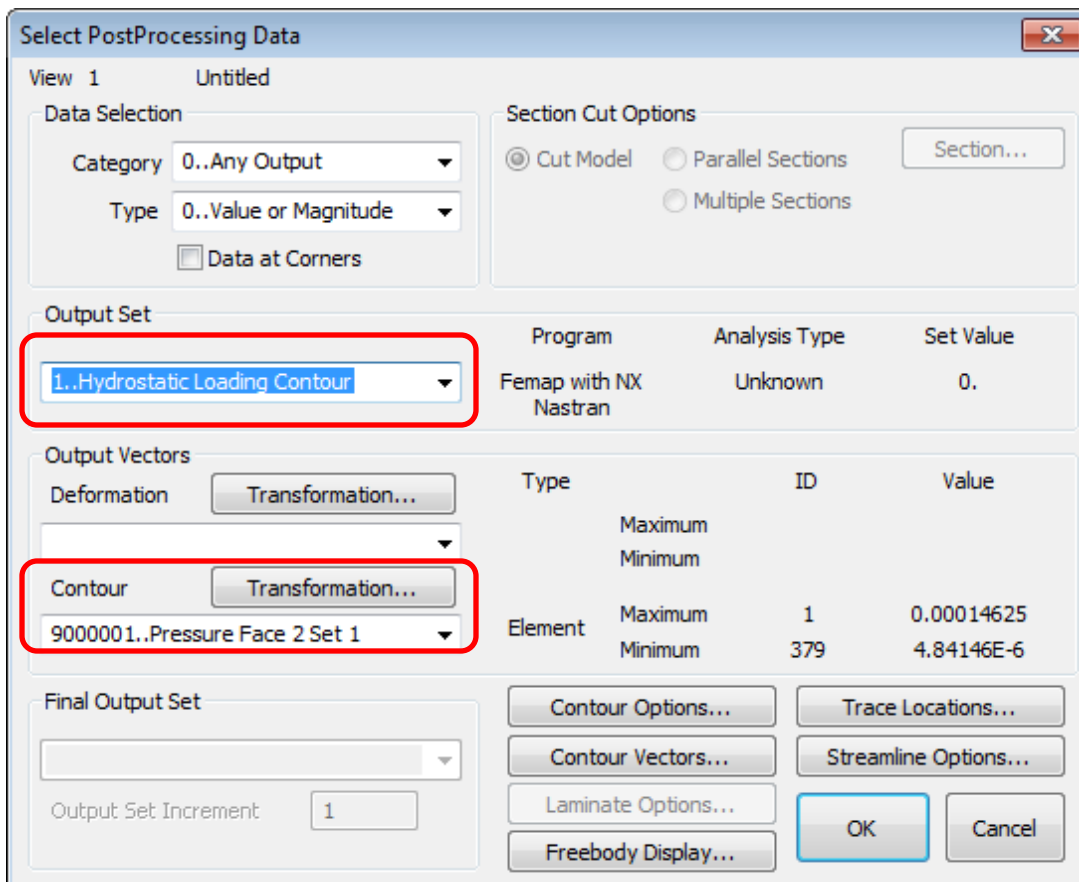
In a model where you have such a loading definition you can set the load to be an output vector in a new set that can then be treated as any output vector and contoured. The first step is to create the new output set by selecting **Model | Output | Create/Manage Set...** in the menu and clicking the **New Output Set...** button in the *Output Set Manager* dialog, and entering a title for the set in the *New Output Set* dialog.



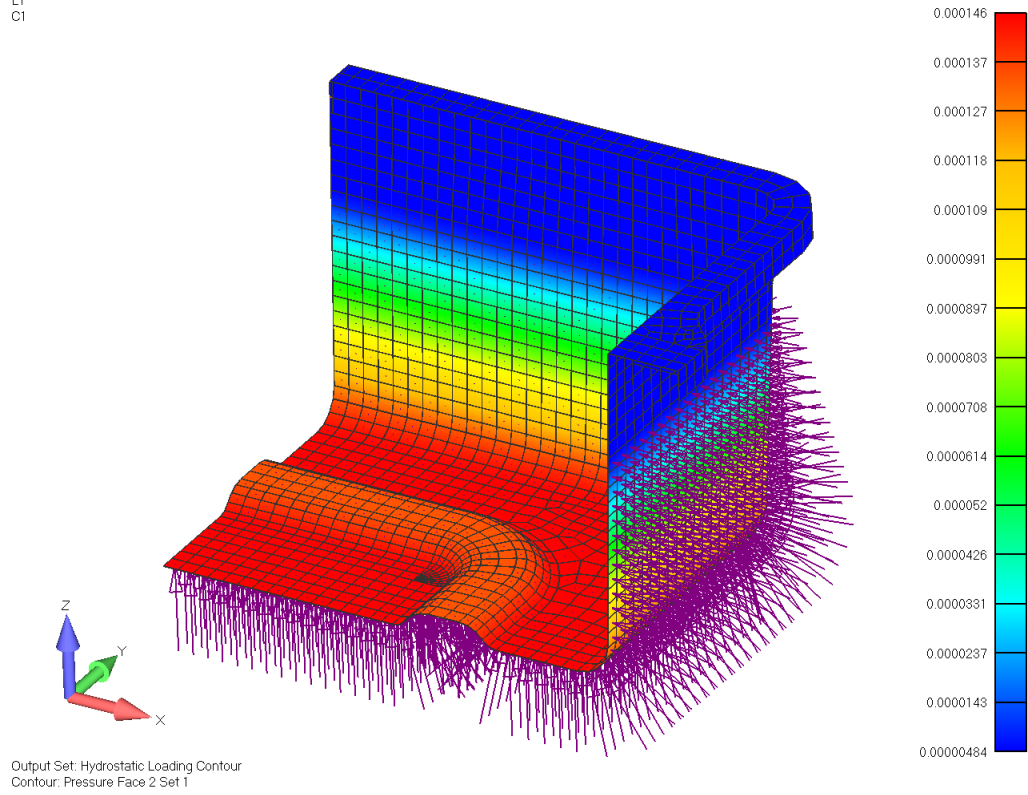
The next step is to populate the set with (in this case) the element pressure load vector by selecting **Model | Output | From Load...** in the menu, select **Pressures** in the *Elemental Loads* section of the *Select Type of Load* dialog, and click OK. Femap then creates the new output vector of pressure elemental pressure loads in the new output set which can then be viewed as a contour using the regular postprocessing commands.



Select **View Select** in the menu and click the **Deformed and Contour Data...** button. In the *Output Set* section of the *Select PostProcessing Data* dialog select new set and the vector for contouring.



V1
L1
C1



Watch the video of this Femap tip on [YouTube](#).